

Index No. DE-5

CERTIFICATE OF LOCATION OF GOVERNMENT CORNER

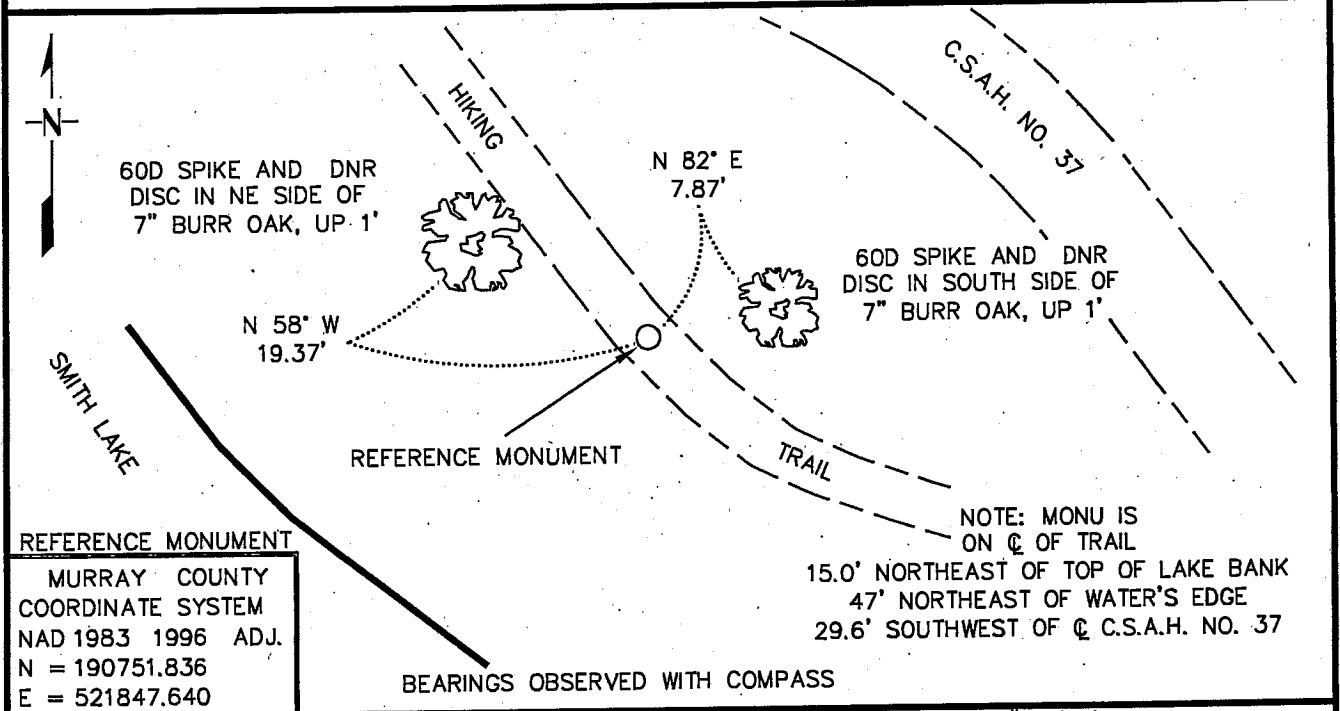
NUMBER 7 MEANDER Corner of Section 6, Township 107 N, Range 40 W
5th Principal Meridian, State of Minnesota, County of MURRAY

At the corner location shown on the sketch:

On _____ found a _____
DATE

left monument as found, lowered monument, removed monument (explain)

■ On 4/29/2008 Placed a 3/4" X 24" REBAR WITH PLASTIC CAP STAMPED
DATE
"MN DNR LS 17003". DOWN 0.1'. REFERENCE MONUMENT TO MEANDER CORNER



REFERENCE MONUMENT

MURRAY COUNTY
COORDINATE SYSTEM
NAD 1983 1996 ADJ.
N = 190751.836
E = 521847.640

Statement of evidence for this corner location is on back of this page.

10/09/09
SPK00220.00.00.01

I certify that this document was researched and prepared by me or under my direct supervision.

SIGNATURE Bruce W. Shepperd DATE 10/14/09 License Number 17003

Title: Land Surveyor Professional Engineer County Surveyor County Engineer

The DNR Division of Lands and Minerals contacted the following for survey information:

Minnesota Secretary of State's Office
Murray County Recorder's Office
Murray County Highway Engineer's Office
Bueltel-Moseng Land Surveying of Marshall
Zieske Land Surveying Inc. of Windom
Madsen Land Surveying Inc. of Fairmont
Pellinen Land Surveying of Hutchinson

1861 U.S. General Land Office notes, obtained from the Secretary of State's Office, show the corner marked with a wood post with the following bearing trees marked:

10" Br Oak, North 37° East, 36 links (23.76 feet)

4" Br Oak, South 56° East, 20 links (13.20 feet)

no tree convenient in Section 6

The corner is also shown:

30.00 chains (1980.00 feet) from the east quarter corner of Section 6

1936 A Survey Map by the National Park Service that shows Sections 5 and 6, T107N, R40W, Sections 1 and 2, T107N, R41W, and Sections 35 and 36, T108N, R41W, in the possession of the DNR Division of Lands and Minerals, shows a north-south fence along the east line of Section 6 that goes from the north side of a road that's on the north side of Smith Lake all the way to the area of the northeast corner of Section 6.

No information is given about the meander corner.

1958 The plat of FORMAN ACRES in Section 6 by Wm. P. Mohr, LS 3271, obtained from the County Recorder's Office, shows symbols for the southeast corner of Section 6 and the east quarter corner of Section 6 but does not indicate what kind of monument was found or set at either corner. The description for the plat commences at the quarter corner and has the following calls:

South 00 degrees 00 minutes West along the east line of said section 1405.16 feet; South 89 degrees 27 minutes West 1905.55 feet; South 04 degrees 21 minutes West 94.92 feet to the point of beginning; etc

No information is given about the meander corner.

1960 The plat of HUDSON ACRES in Section 7 by John F. O'Meara, LS 273, obtained from the County Recorder's Office, shows symbols for the southeast corner of Section 6 and the east quarter corner of Section 6 but does not indicate what kind of monument was found or set at either corner. The description for the plat commences at the quarter corner and has the following calls:

South 00 degrees 00 minutes West along the east line of said section 1405.16 feet; South 89 degrees 27 minutes West 1905.55 feet; South 04 degrees 21 minutes West 94.92 feet; South 15 degrees 22 minutes West 525.32 feet; South 14 degrees 43 minutes West 777.95 feet; South 06 degrees 14 minutes East 1985.75 feet to the point of beginning; etc

No information is given about the meander corner.

1966 The plat of SUBDIVISION OF BLOCK 3 OF FORMAN ACRES in Section 6 by J.S. Richmond, LS 2129, obtained from the County Recorder's Office, shows the same information about the southeast corner of Section 6 and the east quarter corner of Section 6 as the plat of FORMAN ACRES.

No information is given about the meander corner.

1982 March, the DNR Bureau of Engineering traversed to the area of the corner and located the top bank of Smith Lake. The south end of a north-south fence was also located, its location being on the northerly side of CSAH 37 and 260 feet north of the lake bank. A position for the meander corner was not determined.

2008 April 29, the DNR Division of Lands and Minerals computed the east line of Section 6 in the area of the meander corner as follows:

a) on the southerly extension of a line from the east quarter corner of Section 6 thru the south end of the north-south fence that was located in 1982

A field search was conducted for the GLO bearing trees but no evidence of them were found.

A position for the meander was not determined, however a reference monument on the above computed line was set, being a ¾ inch by 24 inch rebar with a plastic cap stamped "MN DNR LS 17003":

1844.30 feet from the east quarter corner of Section 6
60 feet north of the top bank of Smith Lake

Analysis of the above information led the DNR Division of Lands and Minerals to conclude that a line from the east quarter corner of Section 6 thru the south end of a north-south fence that was located in 1982 about 260 feet north of the lake bank is the location of the section line.